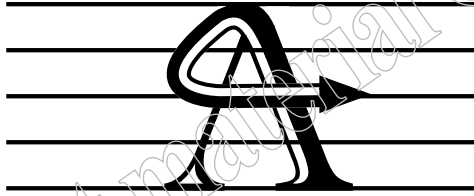
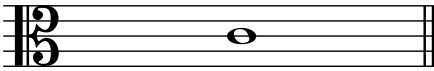


CLEFS



ALTO CLEF

In the alto clef, middle C sits on the third line.



The key signatures are arranged thus:



Also see Page 126 'KEY SIGNATURES IN DIFFERENT CLEFS' (Chapter Three, Tonality)

1. i) Write the interval number in the box above the staff, as shown by the first example.

a)

b)

ii) Now write the letter name underneath each written note.