

LEDGER LINE LAMENT



A POEM ABOUT NOTE HEADS ON A LEDGE



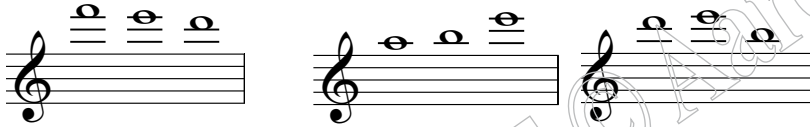
A POEM ABOUT NOTE HEADS ON A LEDGE



A POEM ABOUT NOTE HEADS ON A LEDGE



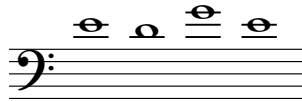
A POEM ABOUT NOTE HEADS ON A LEDGE



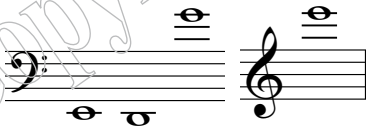
"We're _____ up", said _____ and _____



Since we want to go to _____



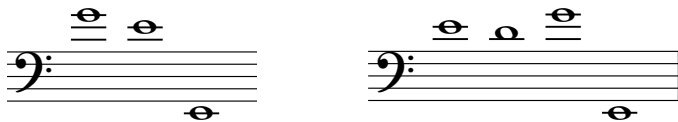
But are worried in case we fall off the _____ of our...



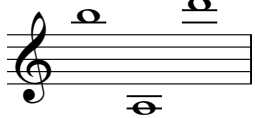
L _____ R!" trembled E, looking down with fright.



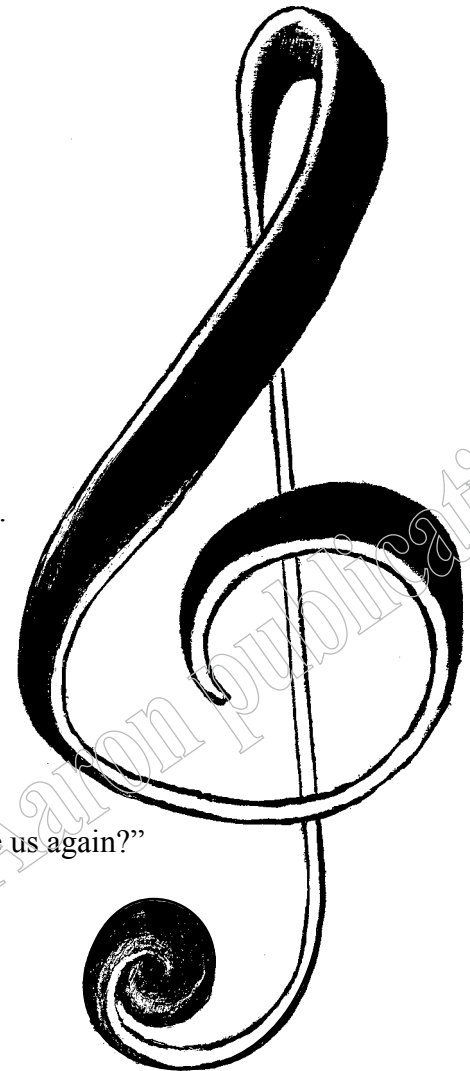
"Be careful!", cried _____, aware of their plight.



" _____", sighed the L _____ r lines, "You woke us again?"



" _____ day for all, you'll drive us insane!"



The treble clef looked at the high notes with glee:



"You can come down to my stave, but I charge a _____!"