

for Victoria College of Music Students

Grade III

Paper A)

1. Rewrite these bass clef notes in the treble clef, keeping the pitch the same.

Copyright materials
© Aaron publications


2. Rewrite the following melody as it sounds in performance.


J.S. Bach, Minuet from Notebook for Anna Magdalena

Copyright materials
© Aaron publications

3. Add bar-lines to each of the following melodies which begin on the first beat of the bar unless indicated otherwise.

Saint- Saens, Introduction and Rondo Capriccioso, Op.28

a) 

b) 

4. Rewrite the following melody so it *sounds exactly the same* but group (beam) the notes correctly and use dotted notes or tied notes where appropriate so the music is easier to read. The first note has been given.



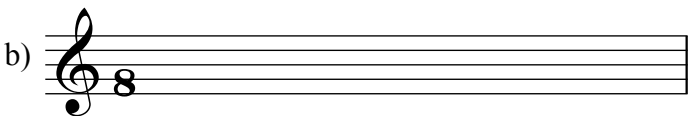
5. Add the upper figure to the following time signatures. In each case write one full bar of semiquaver notes. State whether it is a Simple or Compound time signature. The first exercise has been partly completed.

Three crotchet beats in a bar.

a) 

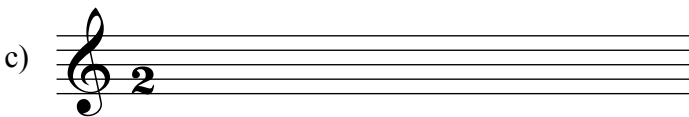
This is a..... time signature

Two dotted crotchet beats in a bar

b) 


This is a..... time signature

Two minim beats in a bar

c) 

This is a..... time signature

6. Add the missing rest or rests at the places marked *

a) 

b) 

7. Add the correct clef and any necessary sharp or flat signs to make the scales named.
Do *not* use key signatures.


a) 

C melodic minor

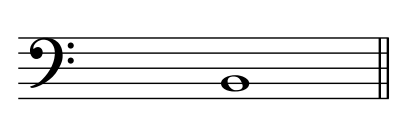
8. In each of the following the given note is the tonic. Write a note *above* the given note to form the named harmonic interval.



Minor 6th

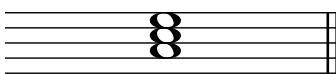


Perfect 4th

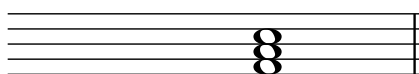


Perfect 5th

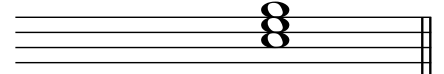
9. Add the correct clef and key signature to each of these tonic triads.



A major



F major



E \flat major

10. For each tonic triad:

a) Identify the **position** as 'root', 'first inversion' or 'second inversion'. The key has been stated.

b) Carefully draw a circle, wherever it is possible, around the harmonic interval of a fourth in each triad (the triad may or may not contain a fourth).

E minor

.....

11. Explain the meaning of:

Allegro con brio.....

Mesto.....

Vivace.....

Sempre leggiero.....

Adagietto.....

12. Complete a four bar rhythm using the given opening, which begins on an upbeat.

.....

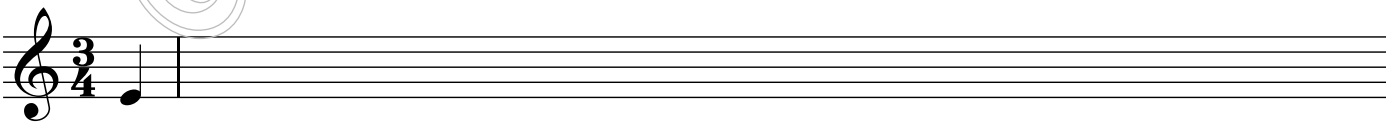
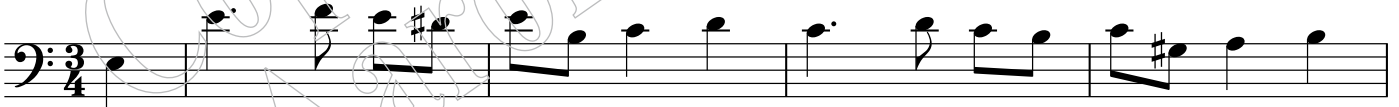
for Victoria College of Music Students

Grade III

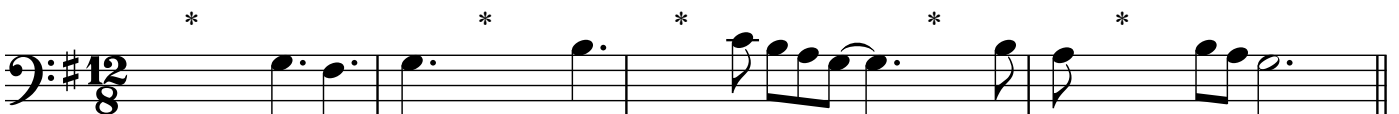
Paper B)

- 1 a) Transpose this melody *up* an octave, using the treble clef.
The first note has been given.

Chopin, Mazurka in A, Op. posth. 67 No.4



2. Add the missing rest or rests at the places marked *



3. Add the time signature in the correct place on the score.

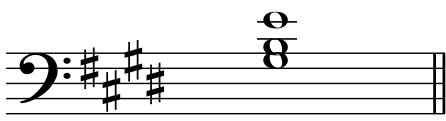
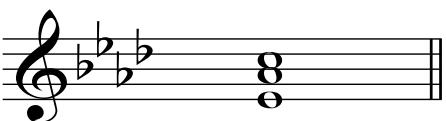
4. Add the missing bar-lines to the following melody which begins on the first beat of the bar.

(Adagio mesto) Tchaikovsky, The sleeping Beauty ('Introduction and Rondo Capriccioso, Op. 36)

5. Write the key signature of E flat major then a one-octave scale going up using quavers.

6. Complete the following bars to form *minor* tonic triads. Name the key below.
The first answer is given.

7 a) Identify each of the following tonic triads as root, first inversion or second inversion. Name the key.

ii)  ii) 

Inversion Inversion

Key Key

8. Below is the theme tune from Benjamin Britten's 'The Young Person's Guide to the Orchestra' (otherwise known as 'Variations and Fugue on a Theme of Purcell' Op.34)

Allegro maestoso e largamente

© Copyright 1947 by Hawkes & Son (London) Ltd.
Reproduced by permission of Boosey & Hawkes Music Publishers Ltd.

a) i) Name the key in which this piece begins.

ii) Which other key has the same key signature?

iii) Circle three notes next door to each other which form a tonic triad.

b) Write the time signature of this piece at an appropriate place on the score.

c) Explain the meaning of:

Maestoso

Largamente

Marc.

d) Draw a circle around two notes next to each other which are a minor sixth apart.

e) Complete the melody from bars 1-4 in notes of *half* the value and add the new time signature required. The first bar has already been written. Do not forget tempo markings, dynamics and all the other details.

f) What do you notice about bars 3-6?

.....

9.

Match the words with the rhythms which fits? The first one has been completed for you.

Fourteen hundred and eighty four	B
Pretty white cat, sitting on a log	
Catch a bird and give it to me	
Pickled eggs, beetroot and yummy sprouts	
Chim Chim Cher-ee, Chim Chim Cher-ee,	

Five musical staves are shown, each with a different time signature and rhythm. The staves are labeled A through E. Staff A is in 4/4 time with a rhythm of four quarter notes, a pair of eighth notes, and a quarter note. Staff B is in 4/4 time with a rhythm of four quarter notes, a pair of eighth notes, and a quarter note. Staff C is in 3/4 time with a rhythm of a quarter note, a pair of eighth notes, a quarter note, a quarter note, a pair of eighth notes, and a quarter note. Staff D is in 2/4 time with a rhythm of a pair of eighth notes, a quarter note, a pair of eighth notes, a quarter note, a quarter note, and a quarter note. Staff E is in 2/4 time with a rhythm of a pair of eighth notes, a quarter note, a quarter note, a pair of eighth notes, a quarter note, and a quarter note.